

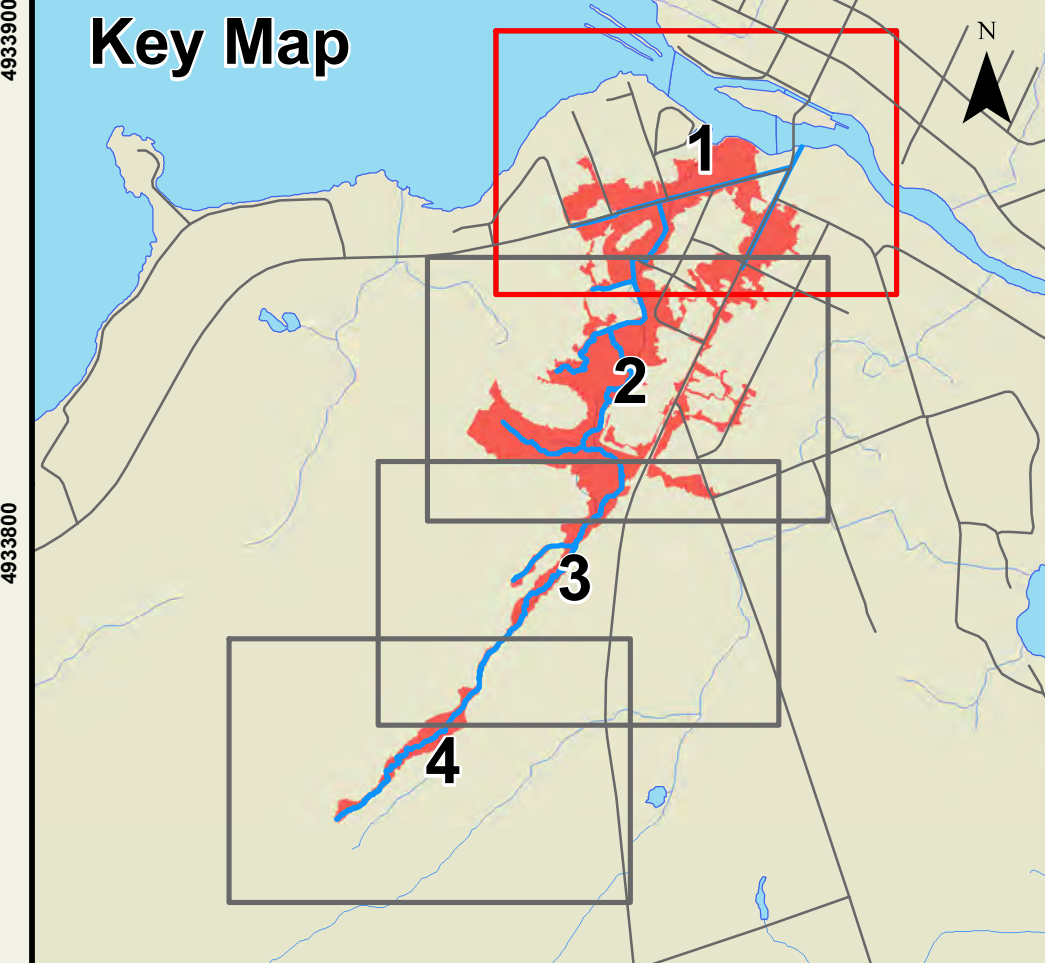
Fenelon Falls South Tributary Flood Plain Map

City of Kawartha Lakes
Printed: November 2023

Legend

- Fenelon Falls South Tributary
- Floodline
- LIDAR Boundary
- Flood Elevations Points
- General Spill Direction
- Culverts
- LIDAR Contours (1.0 m)
- LIDAR Contours (0.5 m)
- SCOOP Contours (1.0 m)

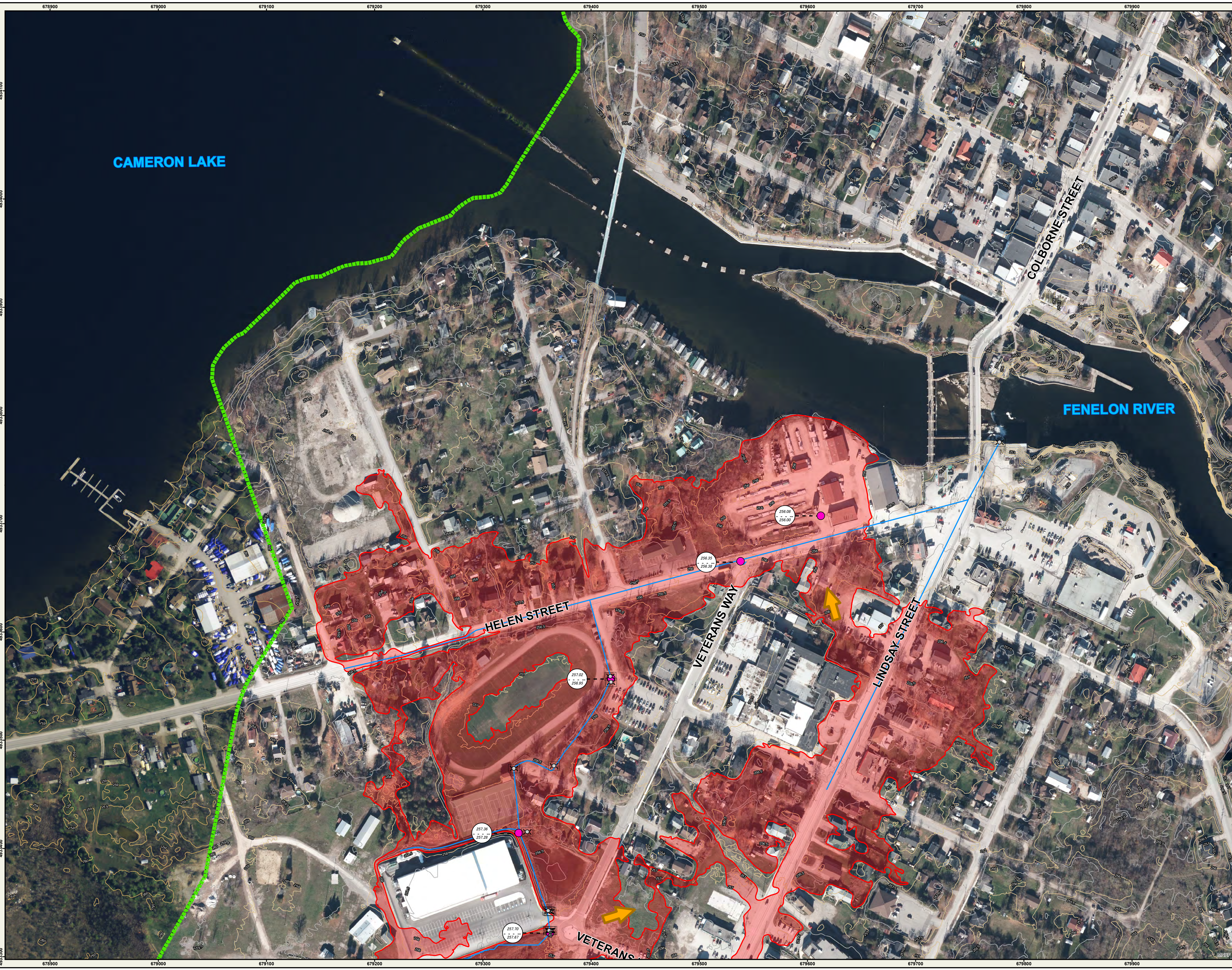
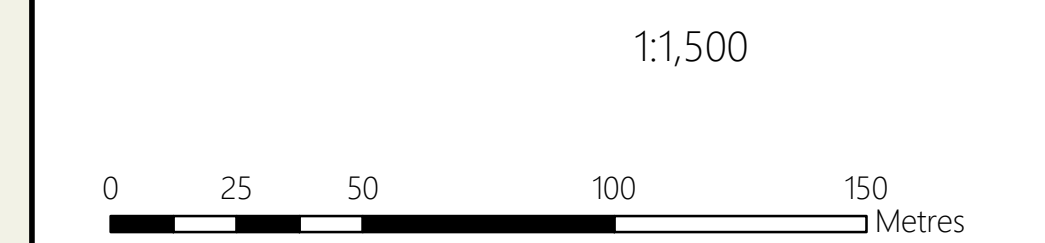
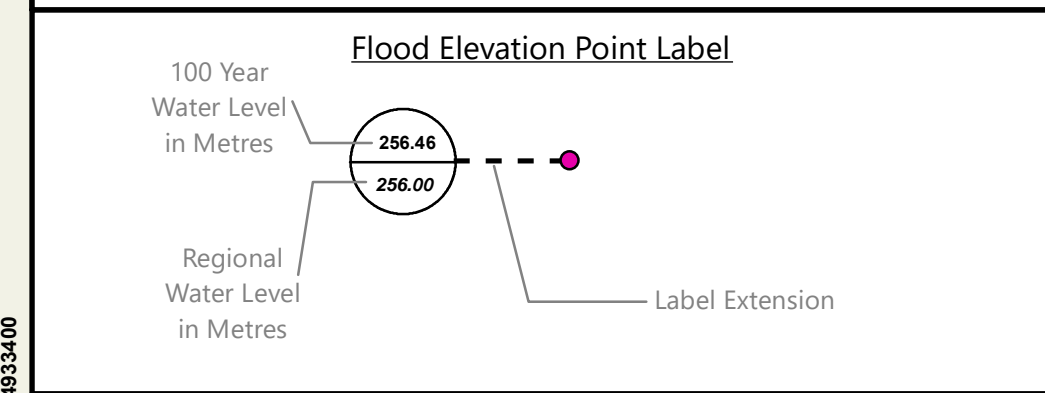
Key Map

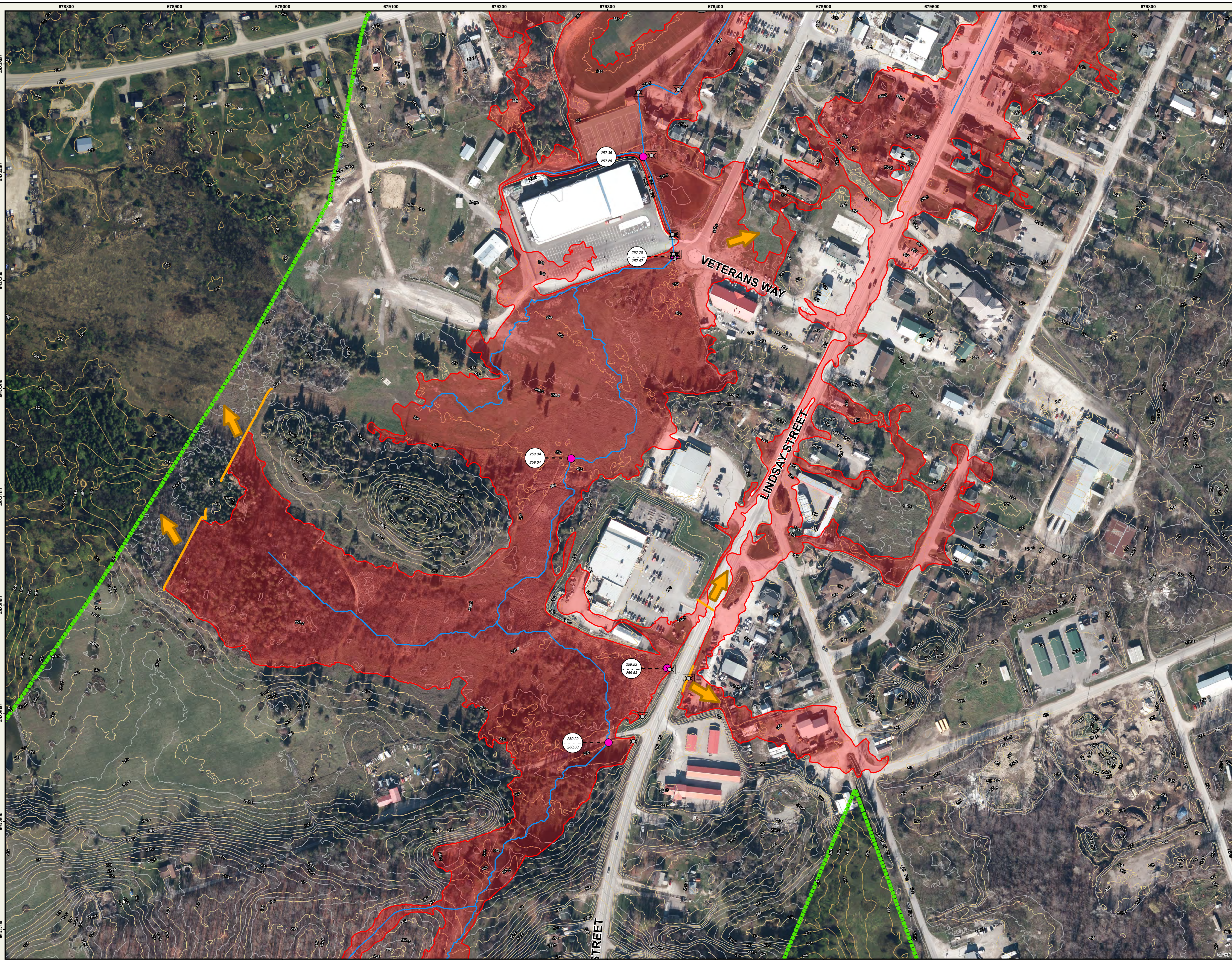


Notes:

- 1) LIDAR (Light Detection and Ranging) survey data collected November 4th, 5th, 6th, and 7th, 2012 by Aero-Photo (1961) Inc.
- 2) Contours produced by Kawartha Conservation GIS staff using LIDAR and GTFBS 2002 data.
- 3) Field Survey of structures by Kawartha Conservation, using RTK GPS.
- 4) Orthophotography (16cm) collected November 8th, 2012.
- 5) The flood inundation areas were delineated using the DEM derived from LIDAR by Kawartha Conservation's GIS department.
- 6) Flood plain modeling was prepared by Ganaraska Region Conservation Authority's engineering department. Input parameters were extracted from base mapping prepared by Kawartha Conservation's Planning and Development Services Department.
- 7) This map is prepared for use in conjunction with the Flood Plain Mapping Study Fenelon Falls South Tributary, 2023.

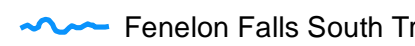
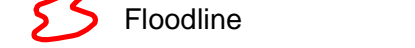

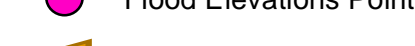





REVISIONS			
No.	Description	By	Date
1	Fenelon Falls South Tributary Flood Plain Mapping Study	RG	Nov 2023

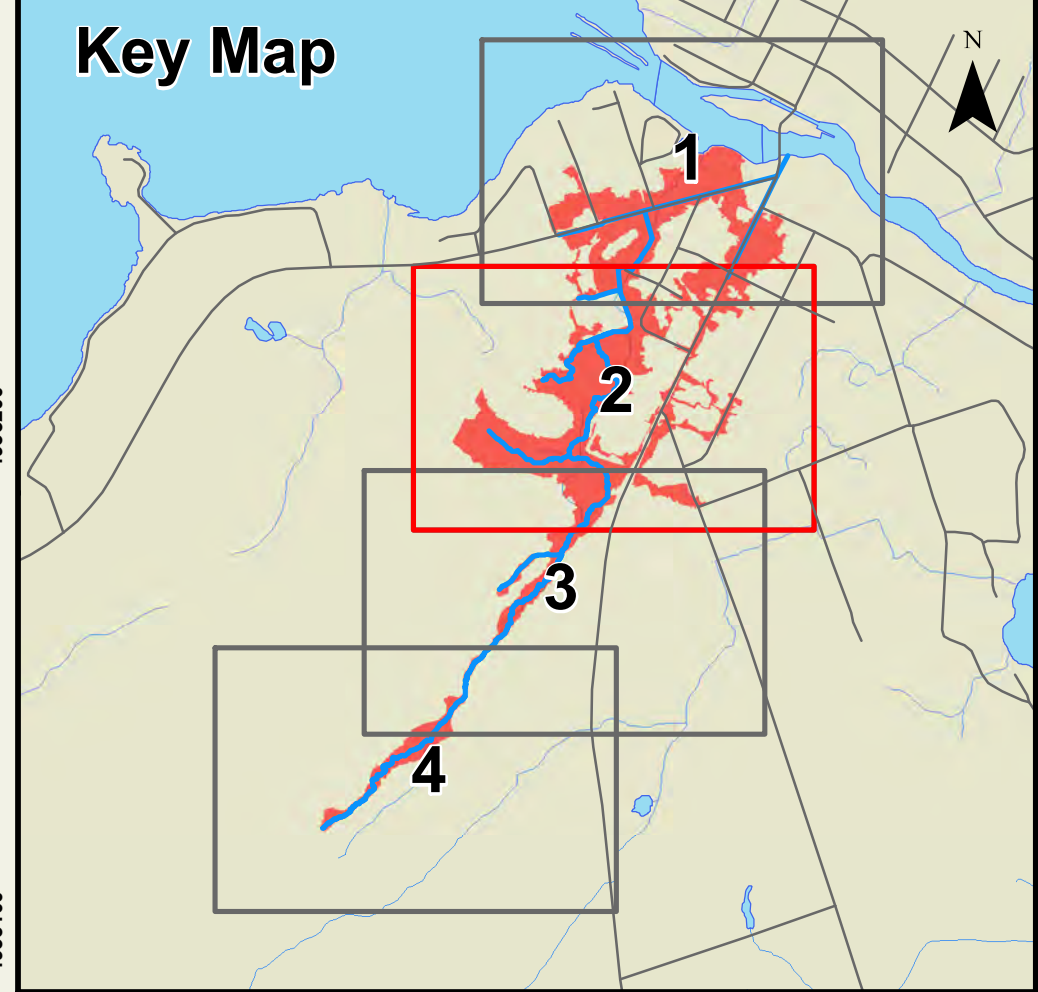




Fenelon Falls South Tributary Flood Plain Map

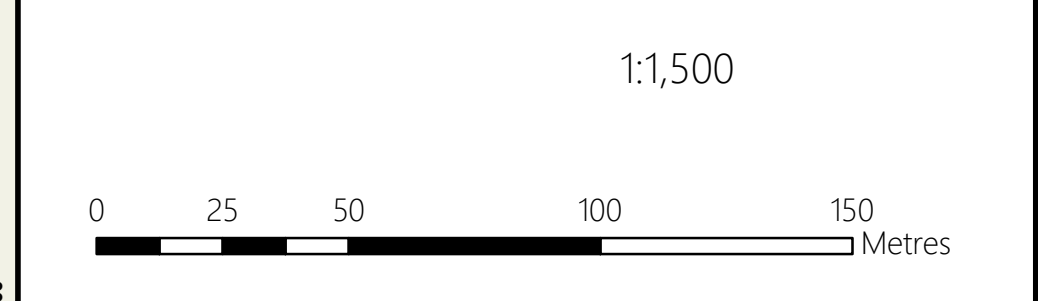
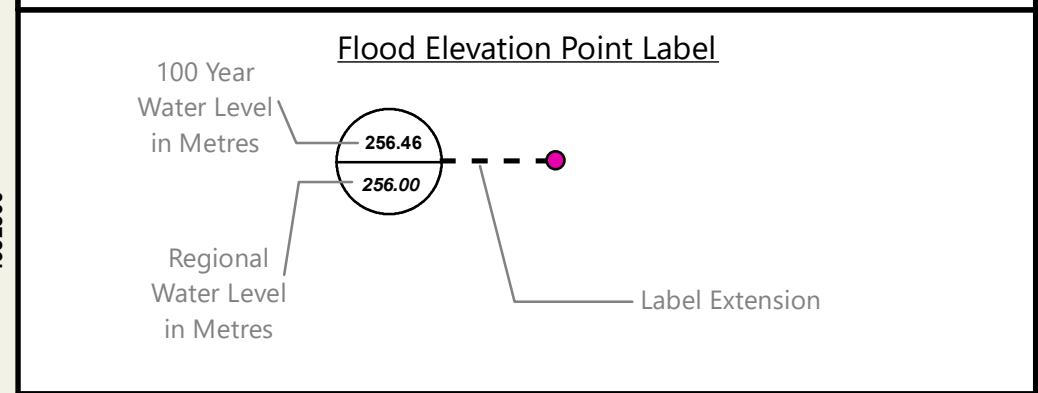
City of Kawartha Lakes
Printed: November 2023

- Legend**
-  Fenelon Falls South Tributary
 -  Floodline
 -  LIDAR Boundary
 -  Flood Elevations Points
 -  General Spill Direction
 -  Culverts
 -  LIDAR Contours (1.0 m)
 -  LIDAR Contours (0.5 m)
 -  SCOOP Contours (1.0 m)



- Notes:**
- 1) LIDAR (Light Detection and Ranging) survey data collected November 4th, 5th, 6th, and 7th, 2012 by Aero-Photo (1961) Inc.
 - 2) Contours produced by Kawartha Conservation GIS staff using LIDAR and GTFBS 2002 data.
 - 3) Field Survey of structures by Kawartha Conservation, using RTK GPS.
 - 4) Orthophotography (16cm) collected November 8th, 2012.
 - Aero-Photo Inc. SCOP 2013 orthophotography was used to supplement 2012 orthophotography.
 - SCOP 2013 Copyright Queens Printer 2013.
 - 5) The flood inundation areas were delineated using the DEM derived from LIDAR by Kawartha Conservation's GIS department.
 - 6) Flood plain modeling was prepared by Ganaraska Region Conservation Authority's engineering department.
 - Input parameters were extracted from base mapping prepared by Kawartha Conservation's Planning and Development Services Department.
 - 7) This map is prepared for use in conjunction with the Flood Plain Mapping Study Fenelon Falls South Tributary, 2023.

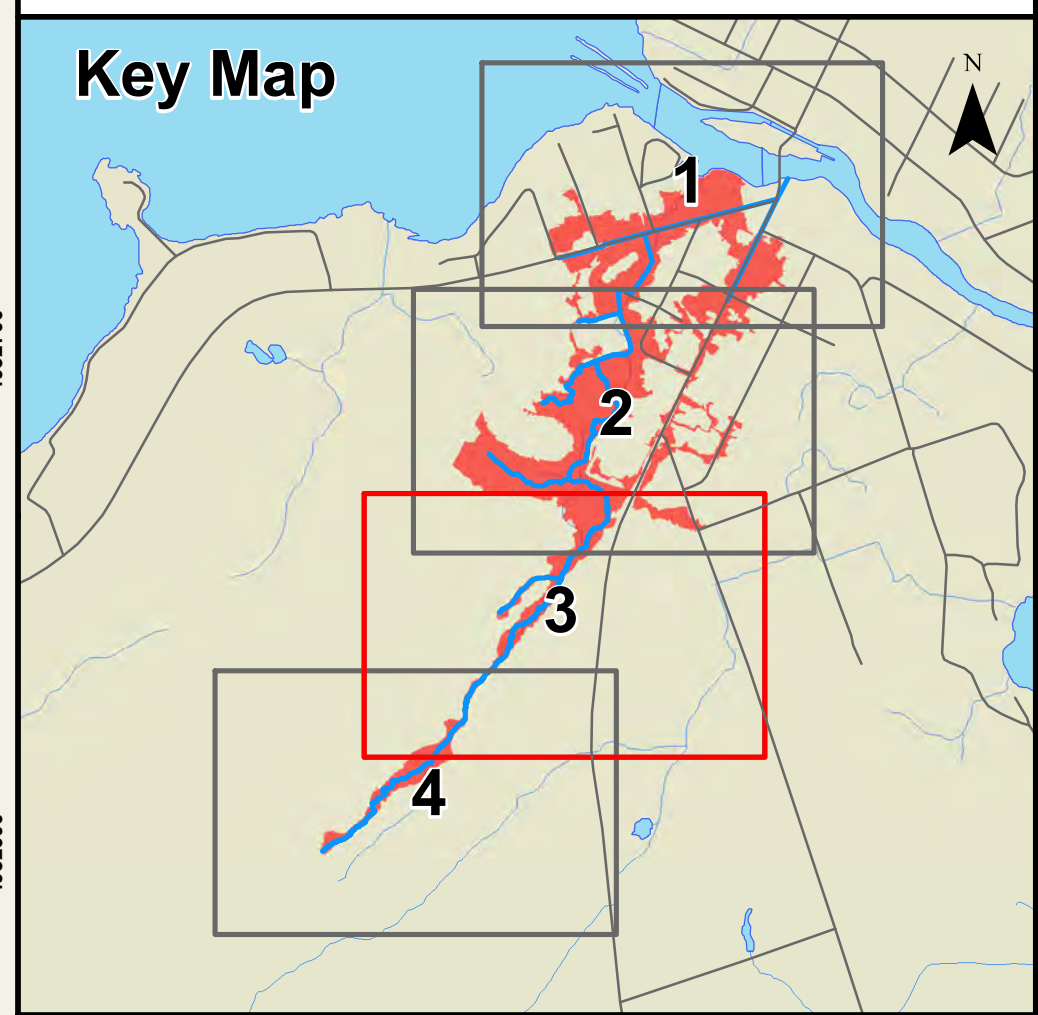
REVISIONS			
No.	Description	By	Date
1	Fenelon Falls South Tributary Flood Plain Mapping Study	RG	Nov 2023



Fenelon Falls South Tributary Flood Plain Map

City of Kawartha Lakes
Printed: November 2023

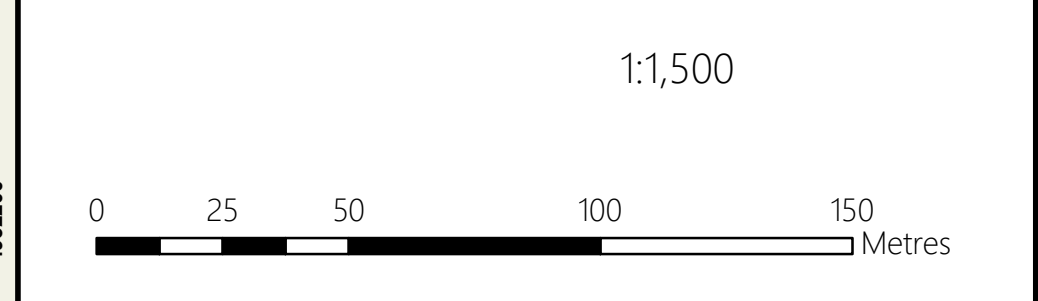
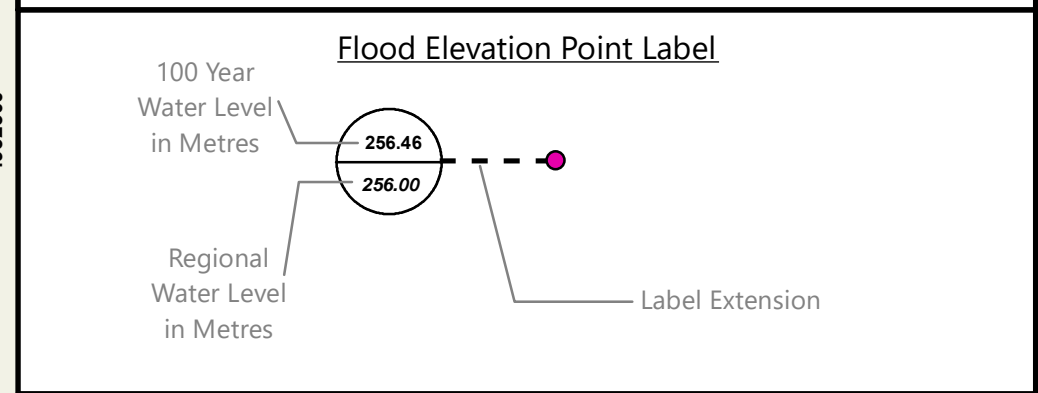
- Legend**
- Fenelon Falls South Tributary
 - Floodline
 - LIDAR Boundary
 - Flood Elevations Points
 - General Spill Direction
 - Culverts
 - LIDAR Contours (1.0 m)
 - LIDAR Contours (0.5 m)
 - SCOOP Contours (1.0 m)



Notes:










- 1) LIDAR (Light Detection and Ranging) survey data collected November 4th, 5th, 6th, and 7th, 2012 by Aero-Photo (1961) Inc.
- 2) Contours produced by Kawartha Conservation GIS staff using LIDAR and GTAFBS 2002 data.
- 3) Field Survey of structures by Kawartha Conservation, using RTK GPS.
- 4) Orthophotography (16cm) collected November 8th, 2012.
- 5) Orthophotography (16cm) collected November 8th, 2012.
- 6) Flood plan modeling was prepared by Ganaraska Region Conservation Authority's engineering department.
- 7) This map is prepared for use in conjunction with the Flood Plain Mapping Study Fenelon Falls South Tributary, 2023.

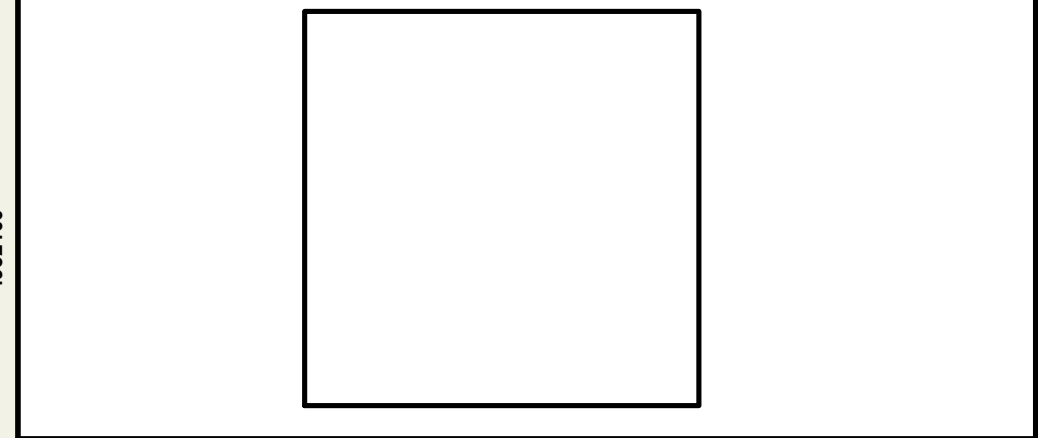
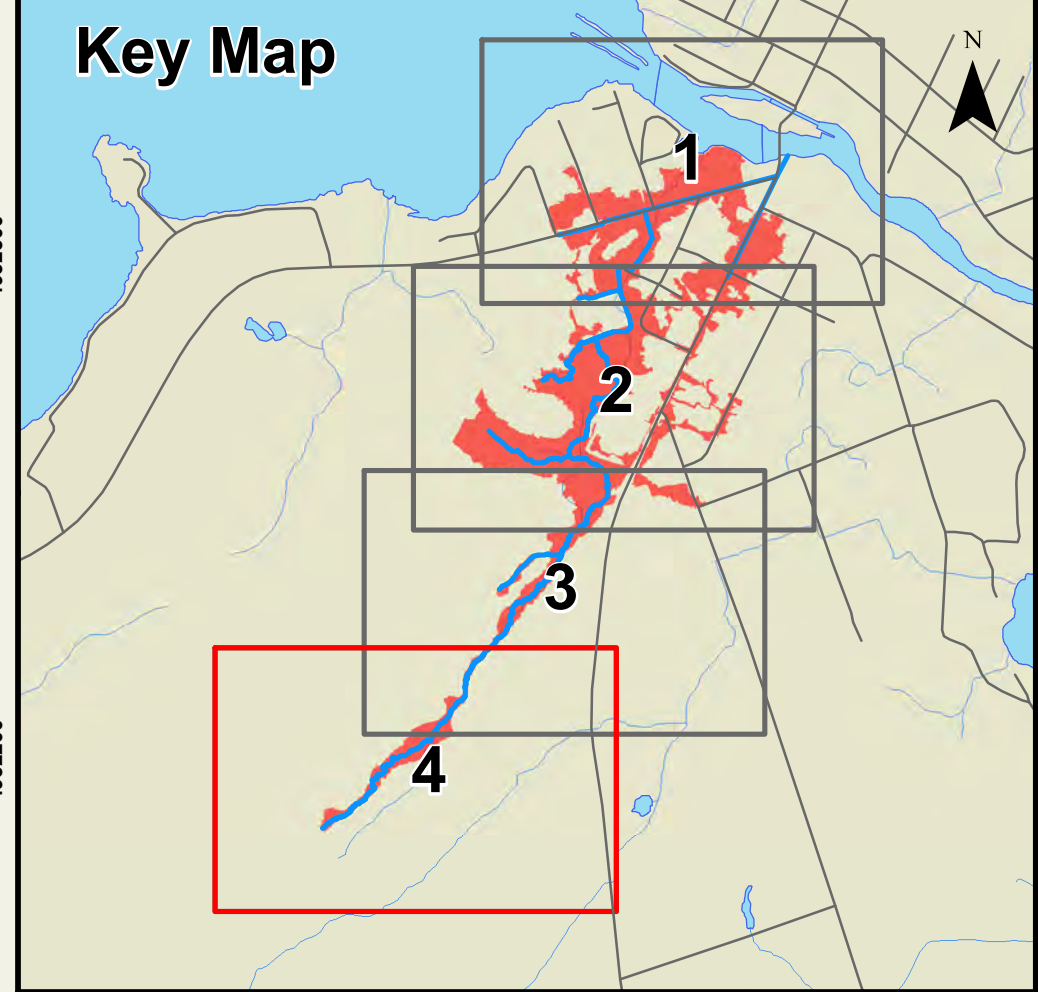
REVISIONS			
No.	Description	By	Date
1	Fenelon Falls South Tributary Flood Plain Mapping Study	RG	Nov 2023



Fenelon Falls South Tributary Flood Plain Map

City of Kawartha Lakes
Printed: November 2023

- Legend**
-  Fenelon Falls South Tributary
 -  Floodline
 -  LIDAR Boundary
 -  Flood Elevations Points
 -  General Spill Direction
 -  Culverts
 -  LIDAR Contours (1.0 m)
 -  LIDAR Contours (0.5 m)
 -  SCOOP Contours (1.0 m)



- Notes:**
- 1) LIDAR (Light Detection and Ranging) survey data collected November 4th, 5th, 6th, and 7th, 2012 by Aero-Photo (1961) Inc.
 - 2) Contours produced by Kawartha Conservation GIS staff using LIDAR and GTFBS 2002 data.
 - 3) Field Survey of structures by Kawartha Conservation, using RTK GPS.
 - 4) Orthophotography (16cm) collected November 8th, 2012.
 - Aero-Photo Inc. SCOOP 2013 orthophotography was used to supplement 2012 orthophotography.
 - SCOOP 2013 Copyright Queens Printer 2013.
 - 5) The flood inundation areas were delineated using the DEM derived from LIDAR by Kawartha Conservation's GIS department.
 - 6) Flood plain modeling was prepared by Ganaraska Region Conservation Authority's engineering department. Input parameters were extracted from base mapping prepared by Kawartha Conservation's Planning and Development Services Department.
 - 7) This map is prepared for use in conjunction with the Flood Plain Mapping Study Fenelon Falls South Tributary, 2023.

REVISIONS			
No.	Description	By	Date
1	Fenelon Falls South Tributary Flood Plain Mapping Study	RG	Nov 2023

