

Flood Plain Map - Community of Lindsay

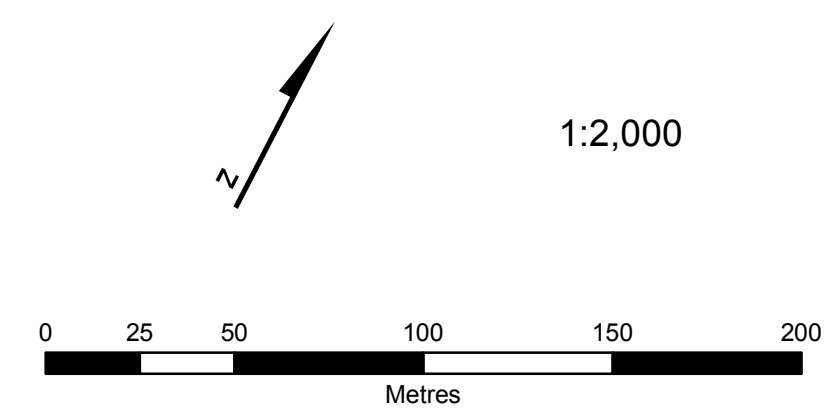
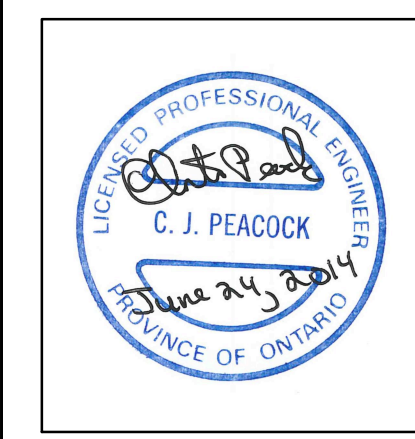
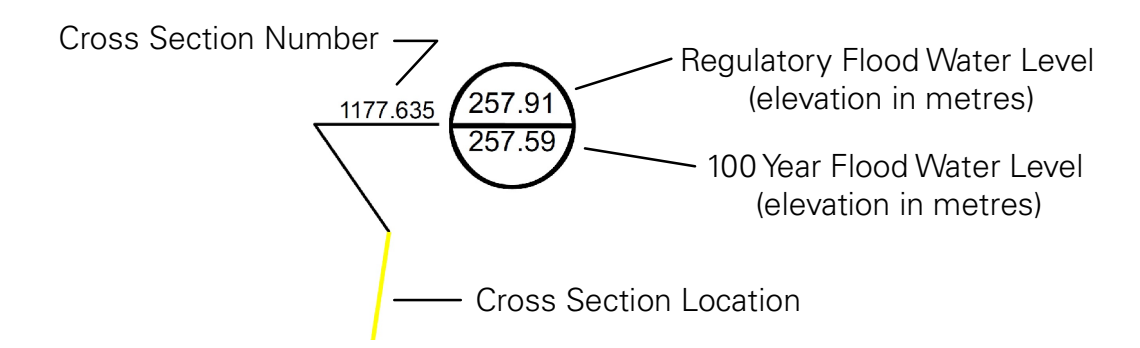
Ops #1 Drain and Jennings Creek

Map 1

Legend

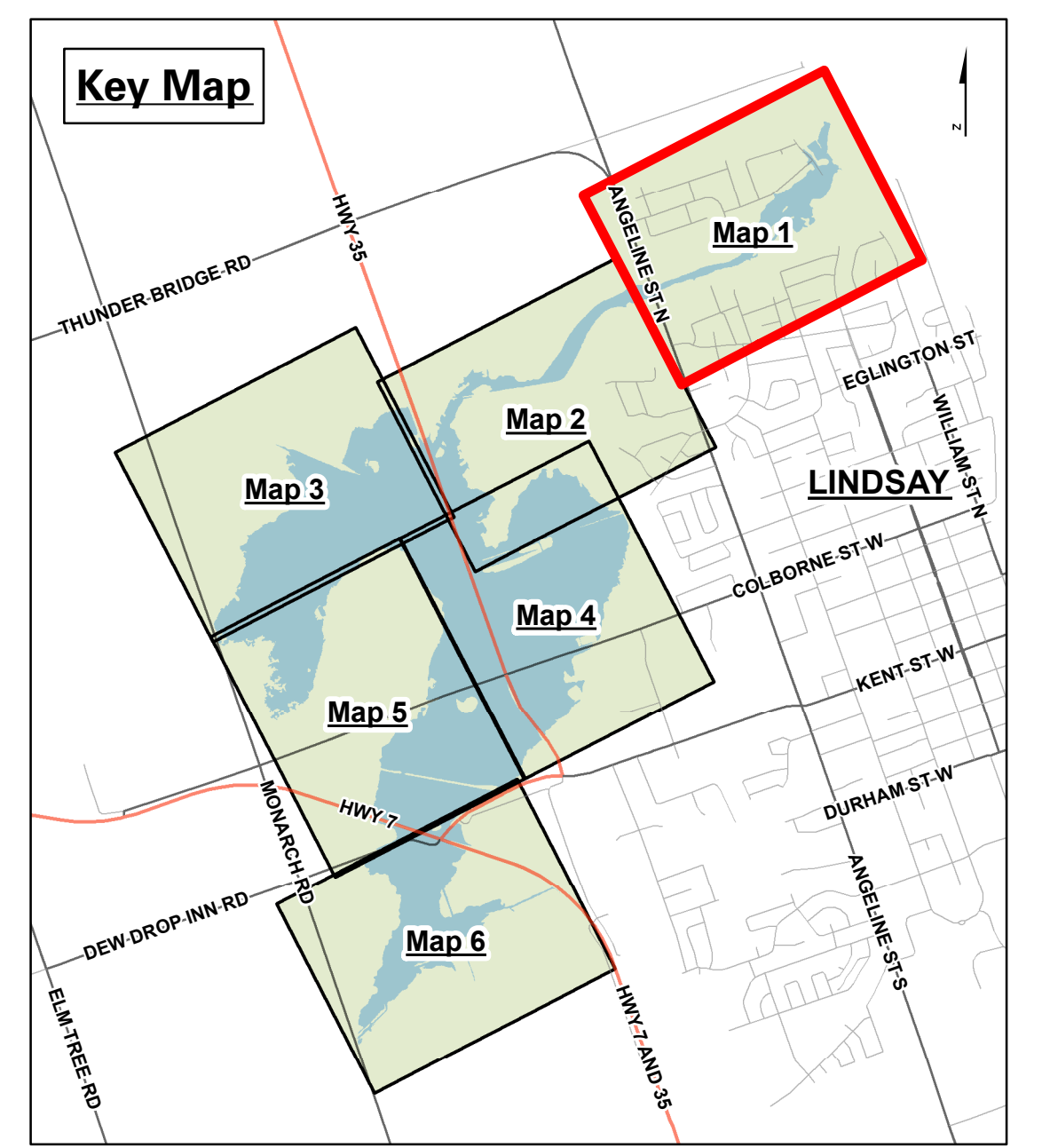
- Main Channel
- Cross Sections
- Contours (0.5m)
- Contours (1.0m)
- Spill Locations
- Regulatory Flooding
- Parcel

Cross Section Numbering



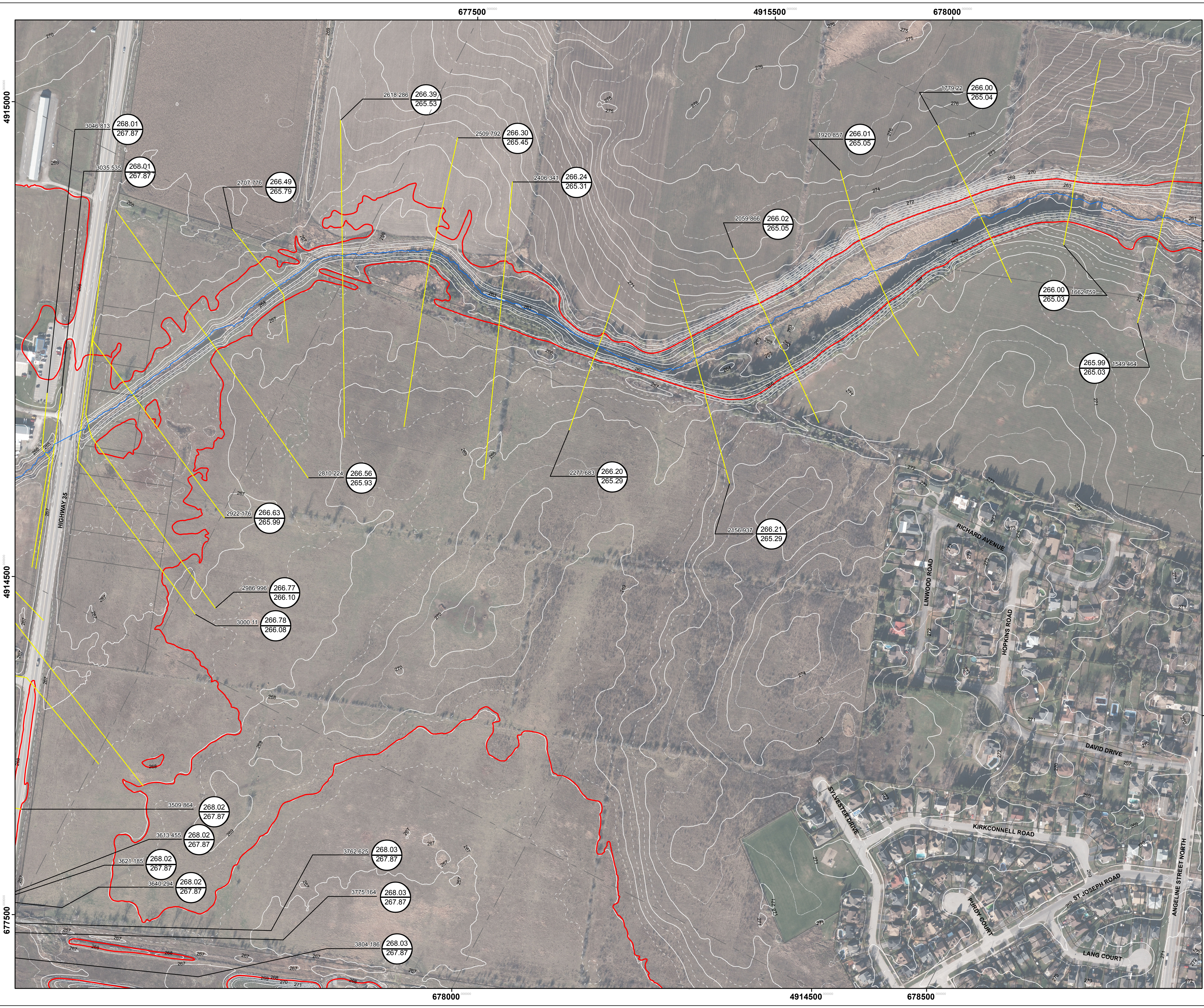
REVISIONS			
No.	Description	By	Date
1	Final Flood Plain Map	CP	June 2014

- Notes:**
- LIDAR (Light Detection and Ranging) survey data collected November 4th, 5th, 6th, and 7th, 2013 by Aero-Photo (1961) Inc.
 - Contours produced by Kawartha Region Conservation Authority using LIDAR data.
 - Field Survey of structures by Kawartha Region Conservation Authority, using RTK GPS control points.
 - Orthophotography (16cm) collected November 8th, 2013 by Aero-Photo (1961) Inc.
 - The flood inundation areas were delineated using the information developed from the sources listed above in notes 1 through 4.
 - Produced using information provided by the Ministry of Natural Resources, Kawartha Region Conservation Authority, and City of Kawartha Lakes. Copyright (c) Queen's Printer, 2014
 - This map forms part of the Ops #1 Drain and Jennings Creek Flood Plain Mapping Study, June 2014



4916000
4915500
4915000
678500
679000

4916500
4916000
679000
679500



Flood Plain Map - Community of Lindsay

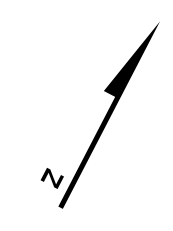
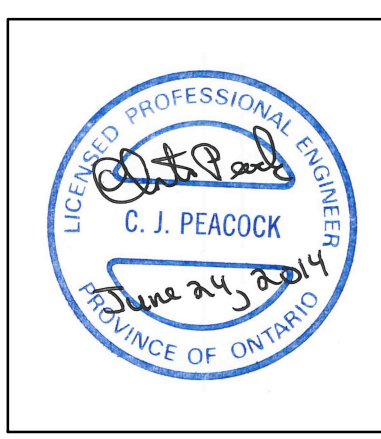
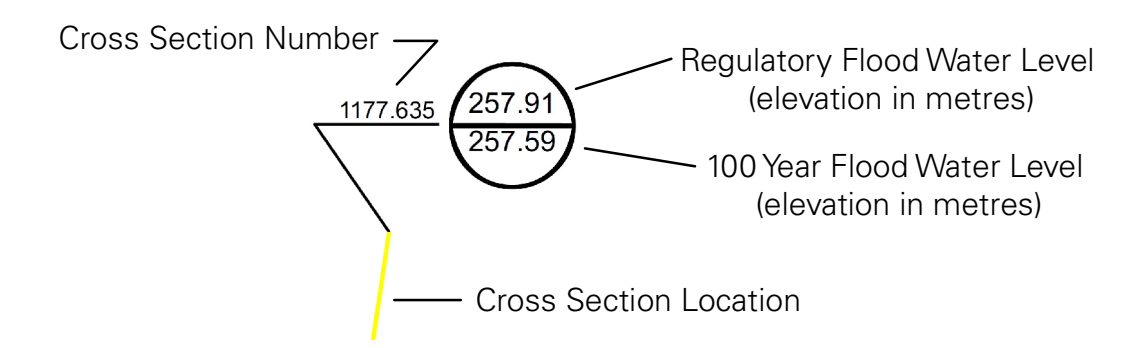
Ops #1 Drain and Jennings Creek

Map 2

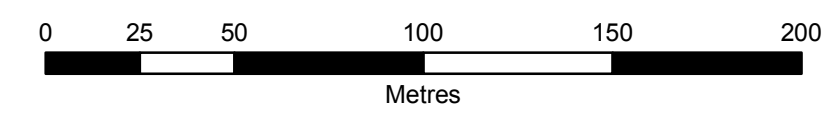
Legend

- Main Channel
- Cross Sections
- Contours (0.5m)
- Contours (1.0m)
- - - Spill Locations
- Regulatory Flooding
- Parcel

Cross Section Numbering

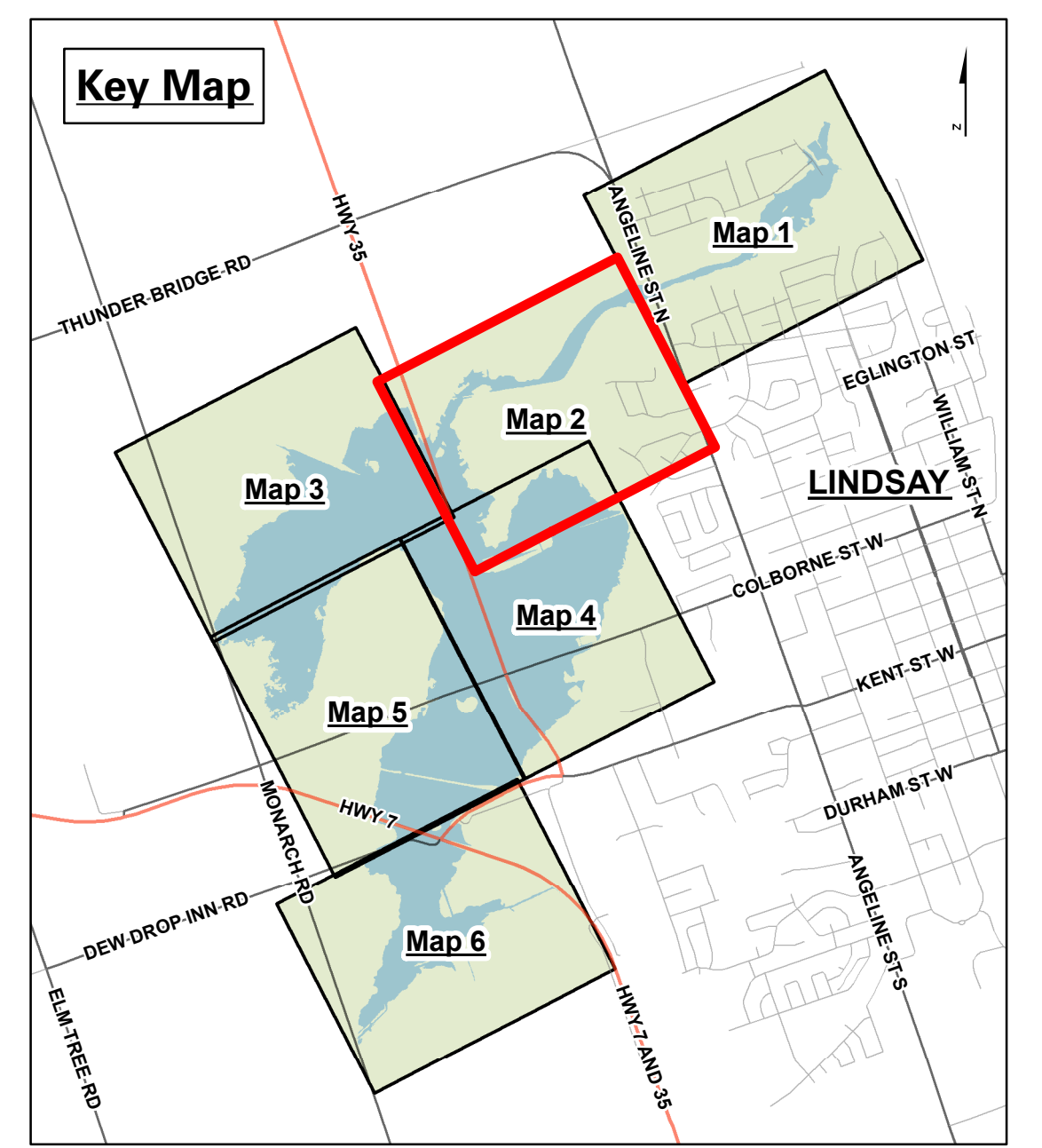


1:2,000



REVISIONS			
No.	Description	By	Date
1	Final Flood Plain Map	CP	June 2014

- Notes:**
- LIDAR (Light Detection and Ranging) survey data collected November 4th, 5th, 6th, and 7th, 2013 by Aero-Photo (1961) Inc.
 - Contours produced by Kawartha Region Conservation Authority using LIDAR data.
 - Field Survey of structures by Kawartha Region Conservation Authority, using RTK GPS control points.
 - Orthophotography (16cm) collected November 8th, 2013 by Aero-Photo (1961) Inc.
 - The flood inundation areas were delineated using the information developed from the sources listed above in notes 1 through 4.
 - Produced using information provided by the Ministry of Natural Resources, Kawartha Region Conservation Authority, and City of Kawartha Lakes. Copyright (c) Queen's Printer, 2014
 - This map forms part of the Ops #1 Drain and Jennings Creek Flood Plain Mapping Study, June 2014





Flood Plain Map - Community of Lindsay

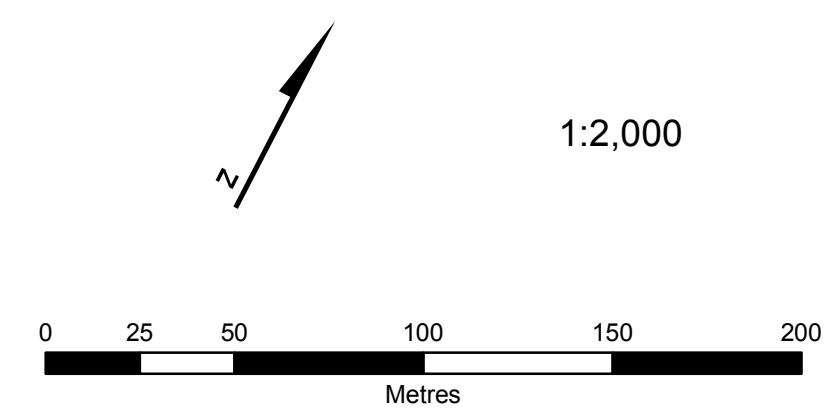
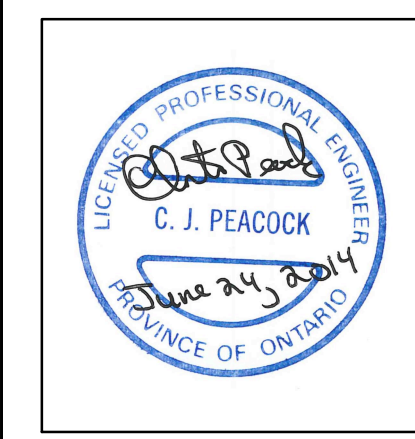
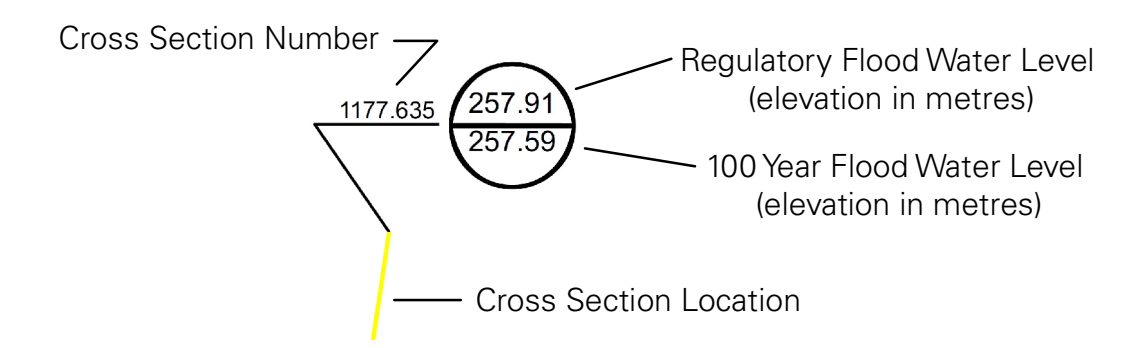
Ops #1 Drain and Jennings Creek

Map 3

Legend

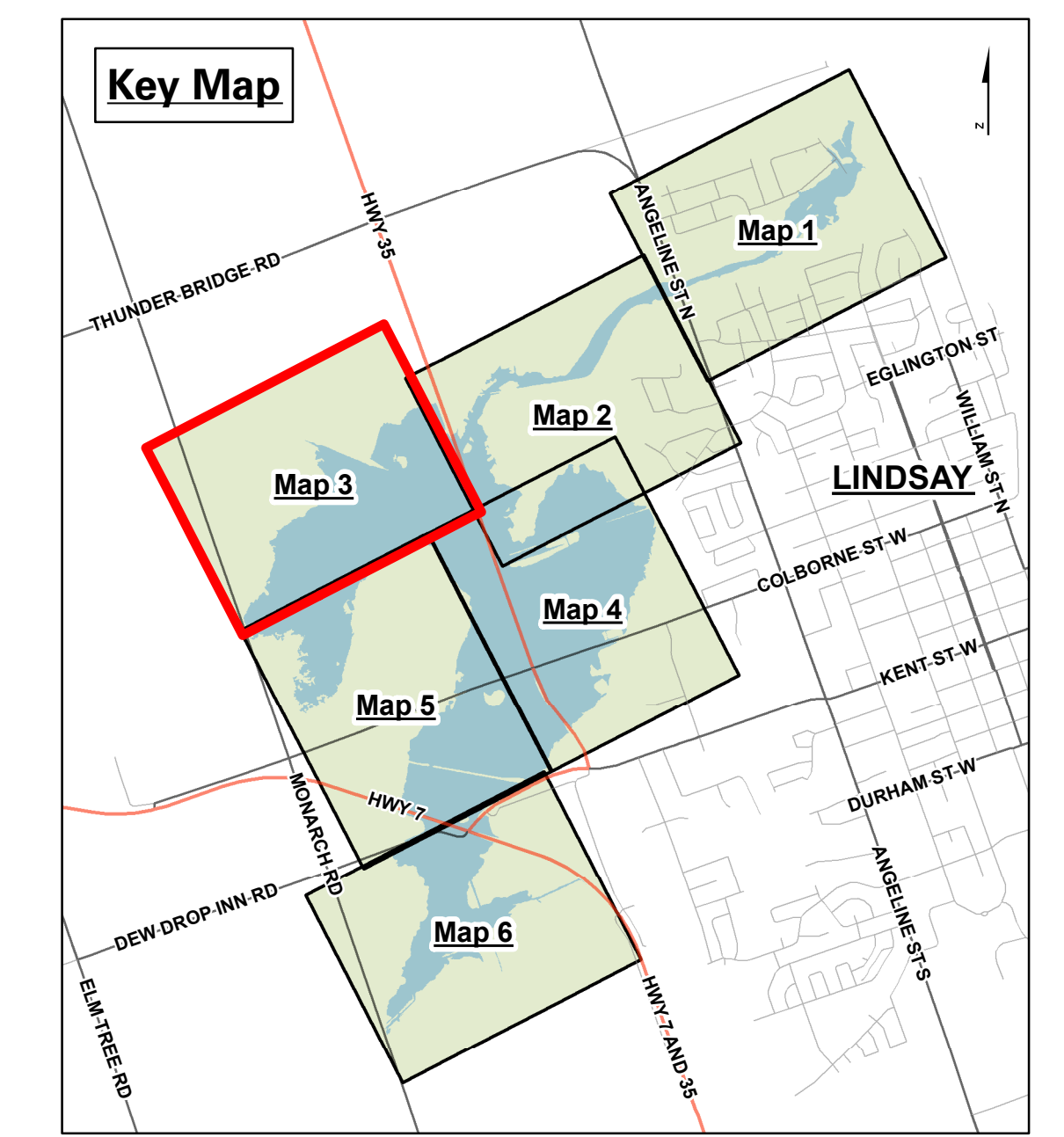
- Main Channel
- Cross Sections
- Contours (0.5m)
- Contours (1.0m)
- - - Spill Locations
- Regulatory Floodling
- Parcel

Cross Section Numbering



REVISIONS		
No.	Description	By / Date
1	Final Flood Plain Map	CP / June 2014

- Notes:**
- LIDAR (Light Detection and Ranging) survey data collected November 4th, 5th, 6th, and 7th, 2013 by Aero-Photo (1961) Inc.
 - Contours produced by Kawartha Region Conservation Authority using LIDAR data.
 - Field Survey of structures by Kawartha Region Conservation Authority, using RTK GPS control points.
 - Orthophotography (16cm) collected November 8th, 2013 by Aero-Photo (1961) Inc.
 - The flood inundation areas were delineated using the information developed from the sources listed above in notes 1 through 4.
 - Produced using information provided by the Ministry of Natural Resources, Kawartha Region Conservation Authority, and City of Kawartha Lakes. Copyright (c) Queen's Printer, 2014
 - This map forms part of the Ops #1 Drain and Jennings Creek Flood Plain Mapping Study, June 2014.



4914500

678500

4914000



Flood Plain Map - Community of Lindsay

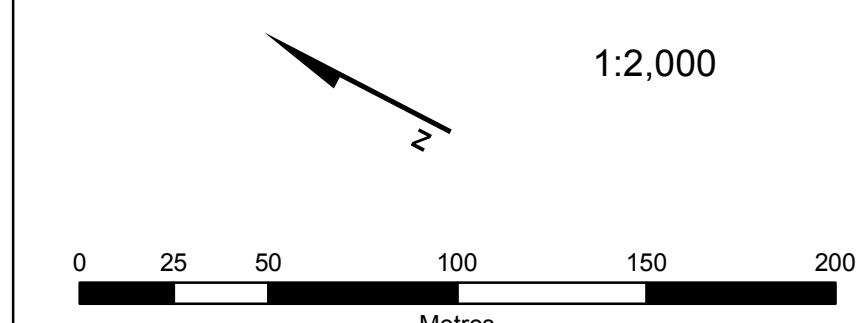
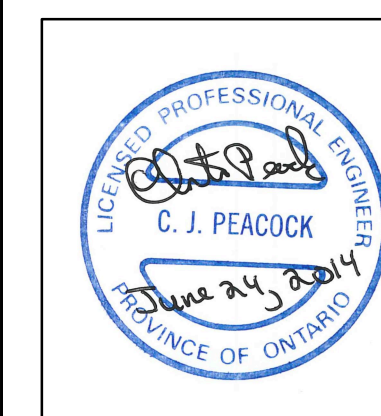
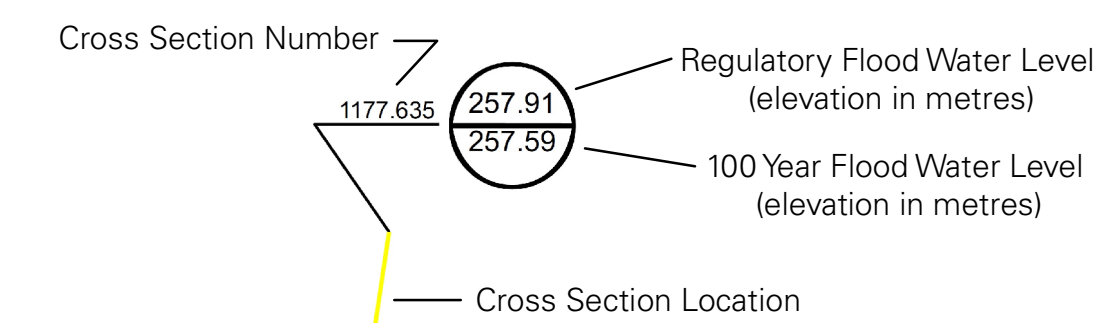
Ops #1 Drain and Jennings Creek

Map 4

Legend

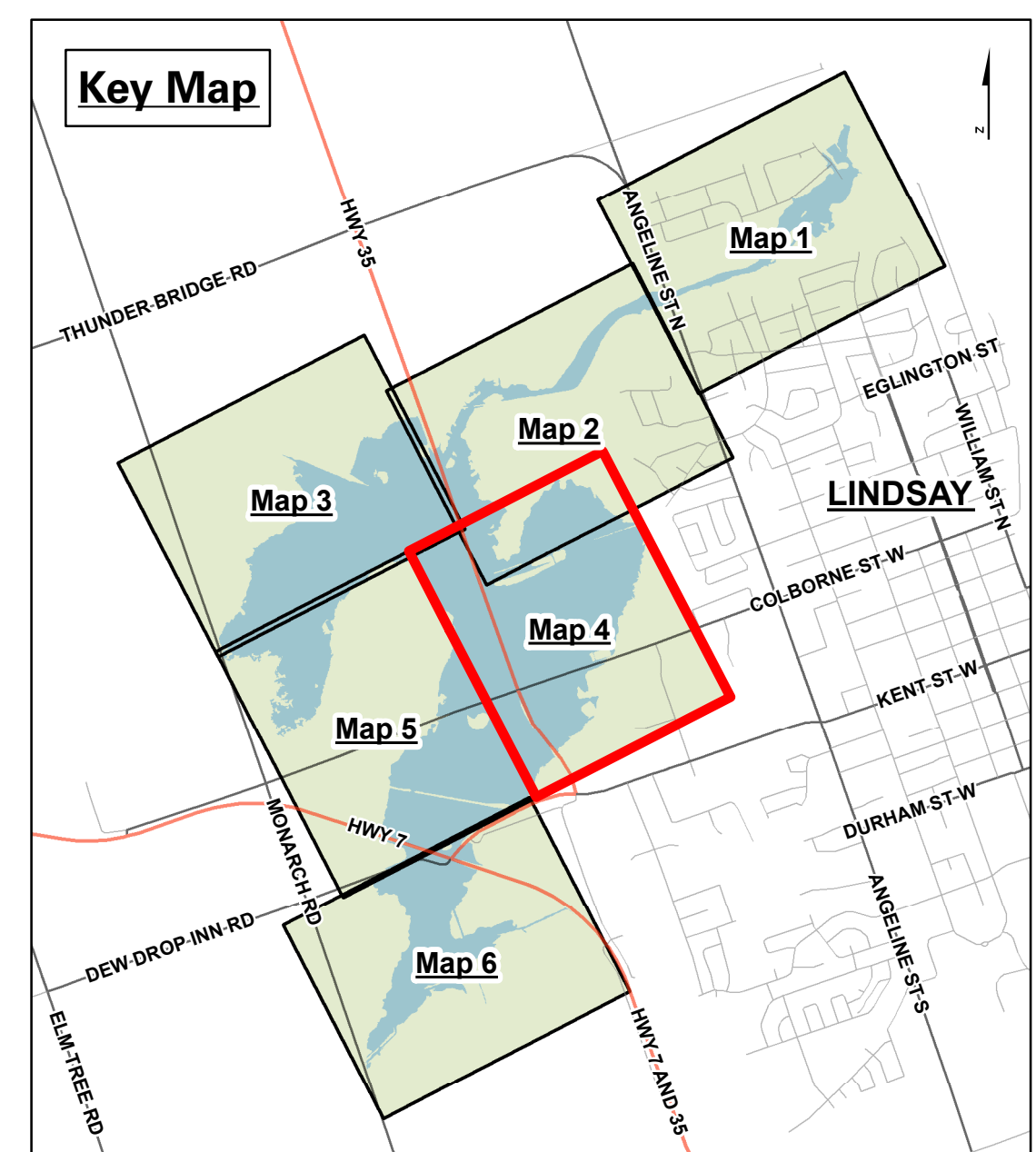
- Main Channel
- Cross Sections
- Contours (0.5m)
- Contours (1.0m)
- Spill Locations
- Regulatory Flooding
- Parcel

Cross Section Numbering



REVISIONS		
No.	Description	By / Date
1	Final Flood Plain Map	CP / June 2014

- Notes:**
- LIDAR (Light Detection and Ranging) survey data collected November 4th, 5th, 6th, and 7th, 2013 by Aero-Photo (1961) Inc.
 - Contours produced by Kawartha Region Conservation Authority using LIDAR data.
 - Field Survey of structures by Kawartha Region Conservation Authority, using RTK GPS control points.
 - Orthophotography (16cm) collected November 8th, 2013 by Aero-Photo (1961) Inc.
 - The flood inundation areas were delineated using the information developed from the sources listed above in notes 1 through 4.
 - Produced using information provided by the Ministry of Natural Resources, Kawartha Region Conservation Authority, and City of Kawartha Lakes. Copyright (c) Queen's Printer, 2014
 - This map forms part of the Ops #1 Drain and Jennings Creek Flood Plain Mapping Study, June 2014



678000
4914500
677500

4914000

677500

4913500
678500

4914000

677500

4913500



Flood Plain Map - Community of Lindsay

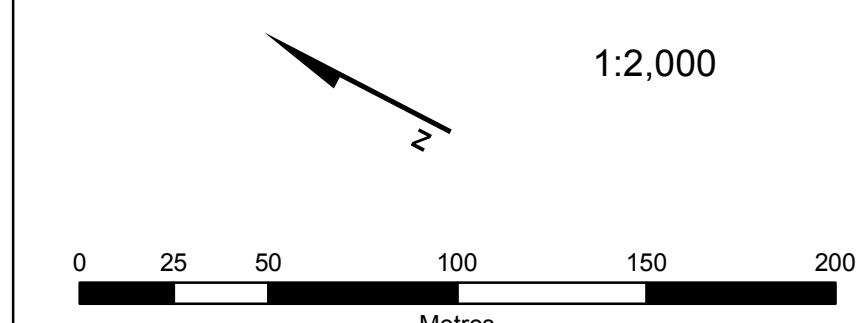
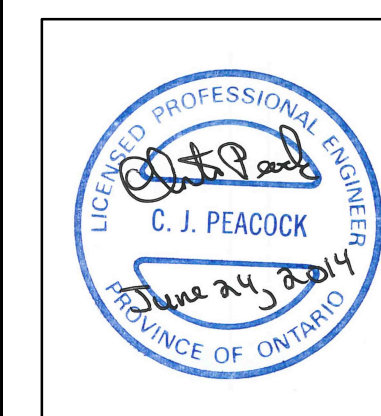
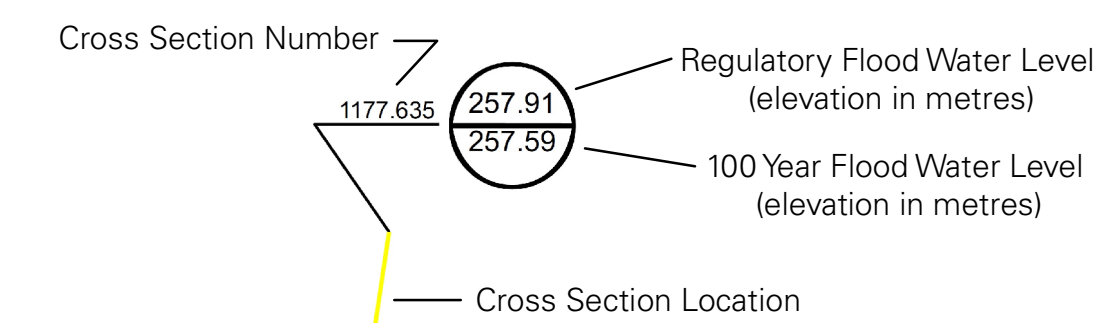
Ops #1 Drain and Jennings Creek

Map 5

Legend

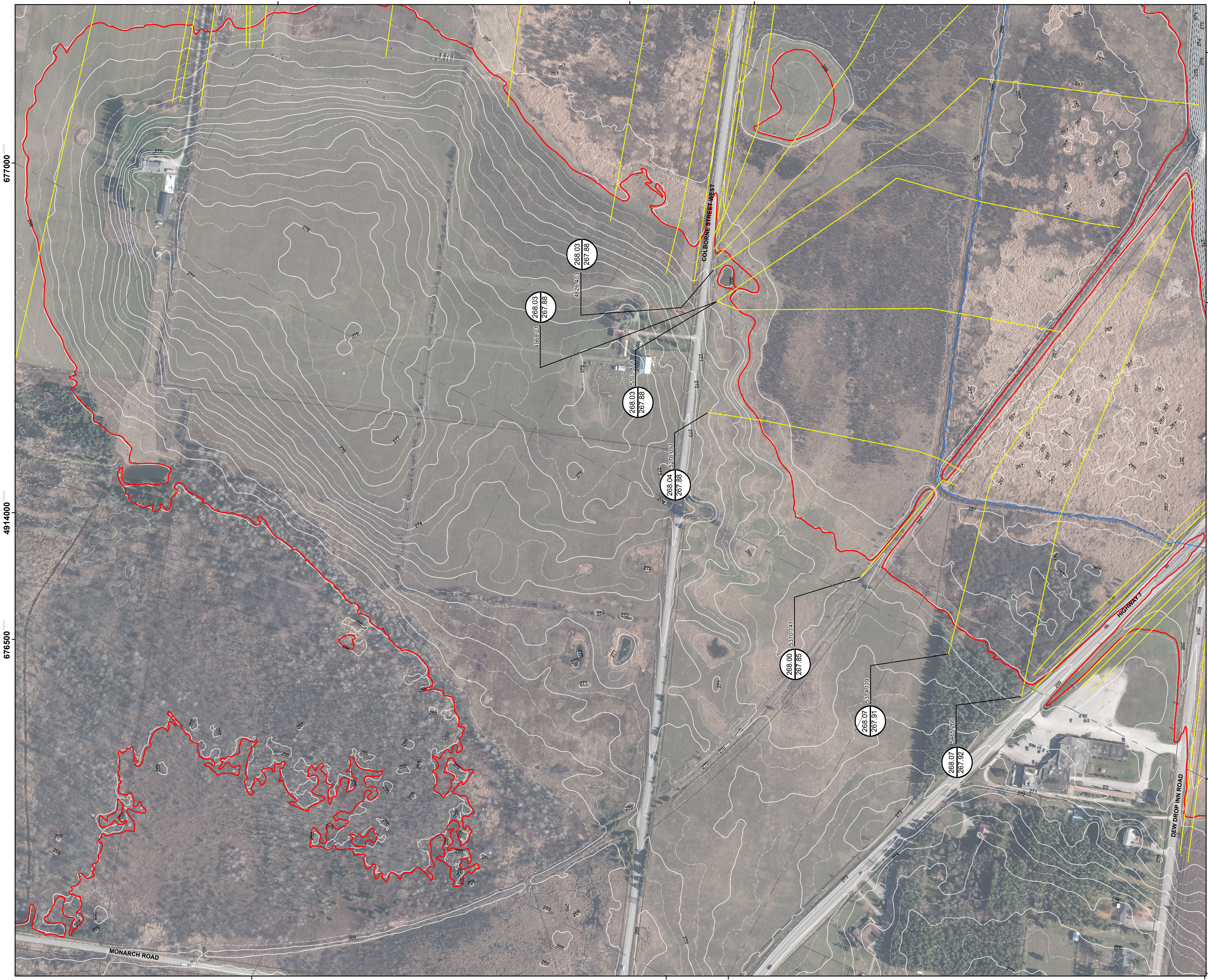
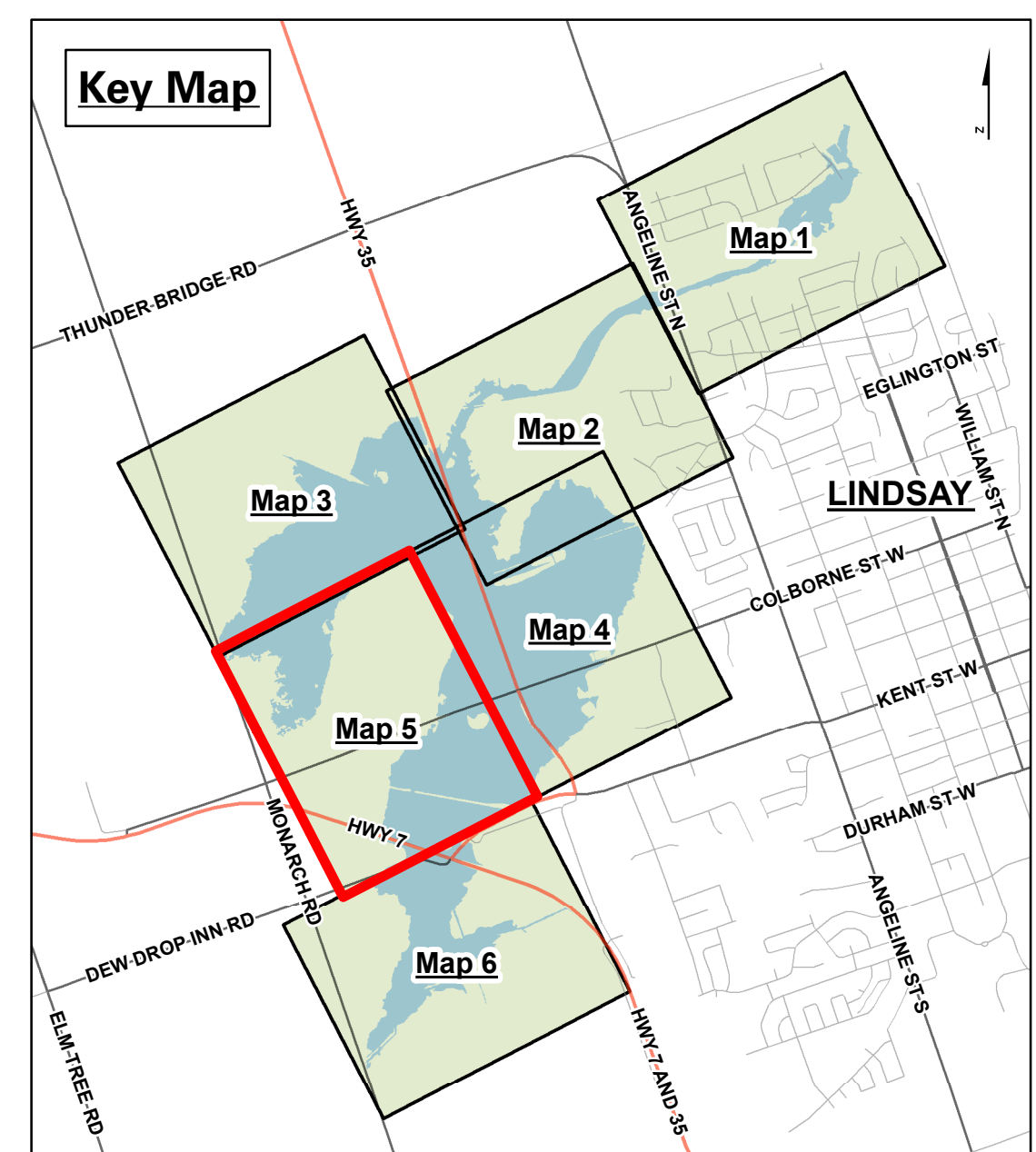
- Main Channel
- Cross Sections
- Contours (0.5m)
- Contours (1.0m)
- Spill Locations
- Regulatory Flooding
- Parcel

Cross Section Numbering



REVISIONS		
No.	Description	By / Date
1	Final Flood Plain Map	CP / June 2014

- Notes:**
- LIDAR (Light Detection and Ranging) survey data collected November 4th, 5th, 6th, and 7th, 2013 by Aero-Photo (1961) Inc.
 - Contours produced by Kawartha Region Conservation Authority using LIDAR data.
 - Field Survey of structures by Kawartha Region Conservation Authority, using RTK GPS control points.
 - Orthophotography (16cm) collected November 8th, 2013 by Aero-Photo (1961) Inc.
 - The flood inundation areas were delineated using the information developed from the sources listed above in notes 1 through 4.
 - Produced using information provided by the Ministry of Natural Resources, Kawartha Region Conservation Authority, and City of Kawartha Lakes. Copyright (c) Queen's Printer, 2014
 - This map forms part of the Ops #1 Drain and Jennings Creek Flood Plain Mapping Study, June 2014



677000

4914000

676500

4913500

676500

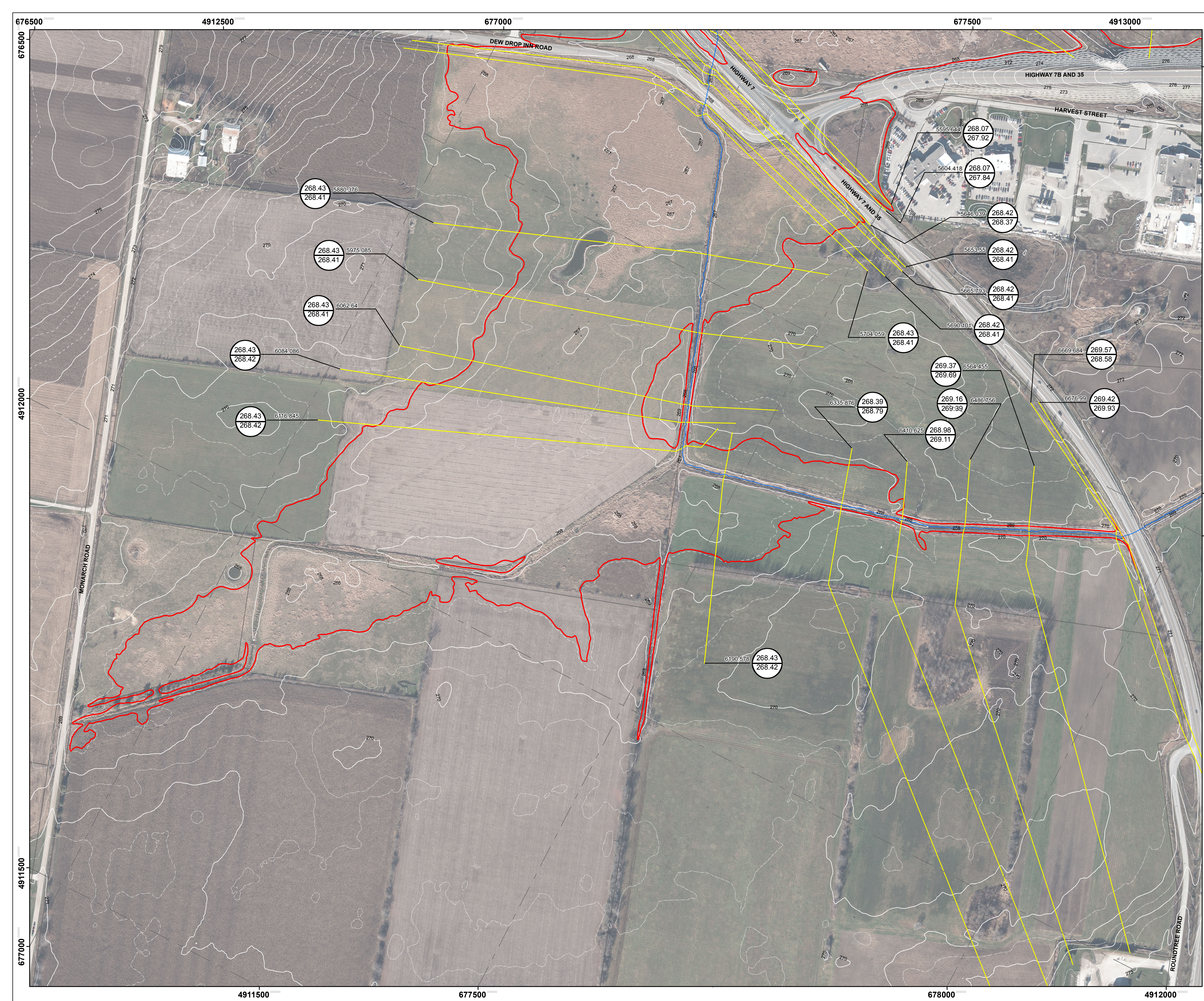
4913000

4912500

4913000

677500

677000



Flood Plain Map - Community of Lindsay

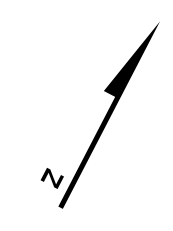
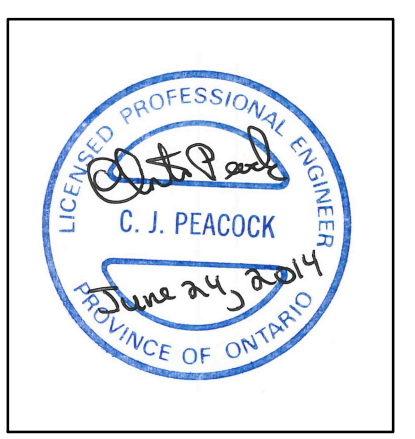
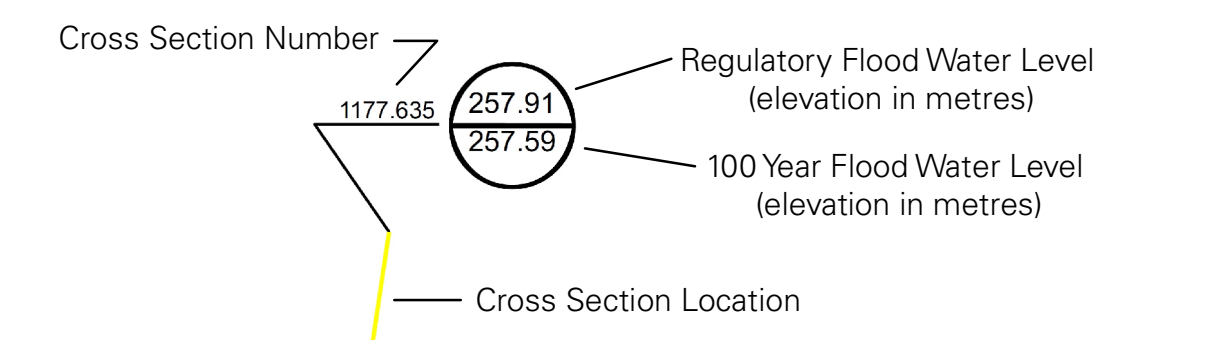
Ops #1 Drain and Jennings Creek

Map 6

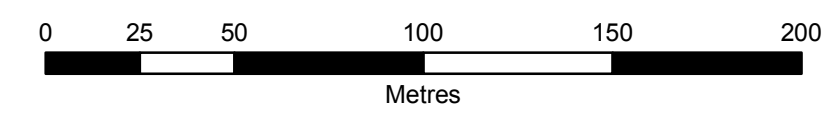
Legend

- Main Channel
- Cross Sections
- Contours (0.5m)
- Contours (1.0m)
- - - Spill Locations
- Regulatory Floodline
- Parcel

Cross Section Numbering



1:2,000



REVISIONS			
No.	Description	By	Date
1	Final Flood Plain Map	CP	June 2014

- Notes:**
- LIDAR (Light Detection and Ranging) survey data collected November 4th, 5th, 6th, and 7th, 2013 by Aero-Photo (1961) Inc.
 - Contours produced by Kawartha Region Conservation Authority using LIDAR data.
 - Field Survey of structures by Kawartha Region Conservation Authority, using RTK GPS control points.
 - Orthophotography (16cm) collected November 8th, 2013 by Aero-Photo (1961) Inc.
 - The flood inundation areas were delineated using the information developed from the sources listed above in notes 1 through 4.
 - Produced using information provided by the Ministry of Natural Resources, Kawartha Region Conservation Authority, and City of Kawartha Lakes. Copyright (c) Queen's Printer, 2014
 - This map forms part of the Ops #1 Drain and Jennings Creek Flood Plain Mapping Study, June 2014

